

MODULAR AIR-HANDLING UNITS



MODULAR AIR-HANDLING UNITS

WHY AEROMASTER XP?

The latest knowledge from field of projection, production and operation of air-handling devices are respected and used in maximal extent during projection, production and installation and following operation.

PROGRESSIVE CONSTRUCTION – EXCELLENT THERMAL, NOISE AND INSTALLATION CHARACTERISTICS

- Unique frameless construction
- Unique totally smooth internal casing meets sanitary standards for all types
- Sandwich panels with 50 mm insulation provide high air soundproofness
- Original connecting of sections provides fast and easy installation
- Integrated sensors save costs for installation of measuring and control
- All internal electric devices have wiring places on external casing which notably simplifies and cheapens installation

PARAMETERS – EUROPEAN STANDARD OF PARAMETERS ACCORDING TO EN 1886

mechanical parameters:

- Mechanical strength: D2 (M)
- Casing air leakage: L2 (M), (L1(M) as an option)
- Filter-bypass leakage: <0.5% (F9)

thermal parameters:

- Thermal transmittance: class T3
- Thermal bridging: class TB3

OPERATION – CHEAP, COMFORTABLE AND SAFE

- Energy savings thanks to heat recovery
- Easily filter replacement
- Easily removable and cleanable stainless drop eliminators

PRACTICAL ACCESSORIES – SIMPLIFY INSTALLATION AND EMPROVE EASY OF MAINTENANCE

- Inspection window
- Internal lighting of fan sections
- Adjustable frame feet
- Condensate drain kits

SURFACE TREATMENTS – FOR ALL REQUESTS

- Zinc-coated, stainless, RAL and their combinations
- Stainless plate

EXCELLENT CONTROL SYSTEMS

- Complex delivery including control system, i.e. frequency inverter, respectively VCS control unit

CERTIFICATION

- Pof conformity by authorized person TüV Süd Czech
- SZÚ approved for use in hygiene applications
- Certified quality management system according to ISO 9001

EXTENDED GUARANTEE

- Up to 5 year guarrantee
- Guaranteed quality of materials and components

PROMPTNÍ DODÁVKY – U NÁS VČETNĚ REGULACE

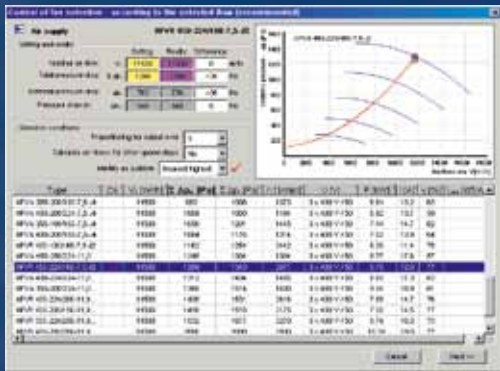
- Delivery within 3 weeks of conclusion of the contract

UNIQUE SELECTION SOFTWARE – AEROCAD

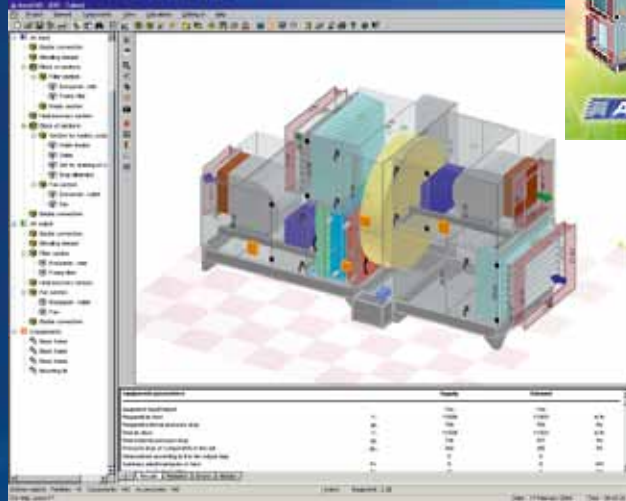
- Inconquerable graphical perfection at level of virtual reality (VRML)
- Unit simulation in real space with a scene
- Exports to 3D CAD systems (DXF) and exports to BMP
- Perfect exact calculations of all components
- Easy state and operation device simulations
- User definable extent of print-outs
- Unlimited number of active units in project

PERFECT AND COMPREHENSIVE SELECTION

Unique comprehensive graphical selection and calculation program AeroCAD is at your disposal when projecting AeroMaster XP units.

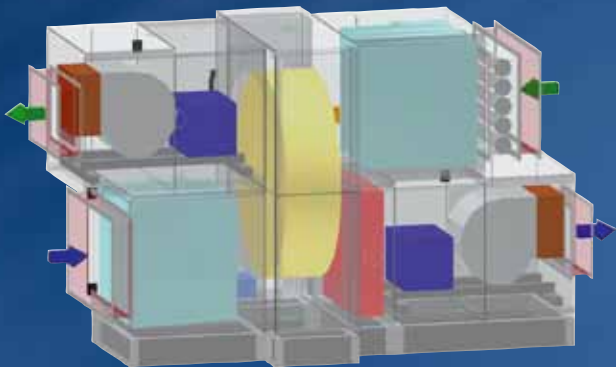


CALCULATION OF FAN PARAMETERS



SELECTED UNIT

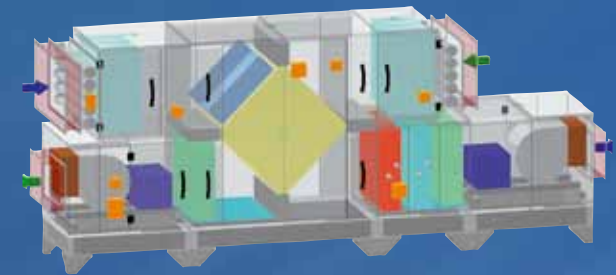
example of unit with rotary heat exchanger and water heating



example of unit with mixing, water heating and cooling



example of unit with cross heat exchanger, water heating and cooling

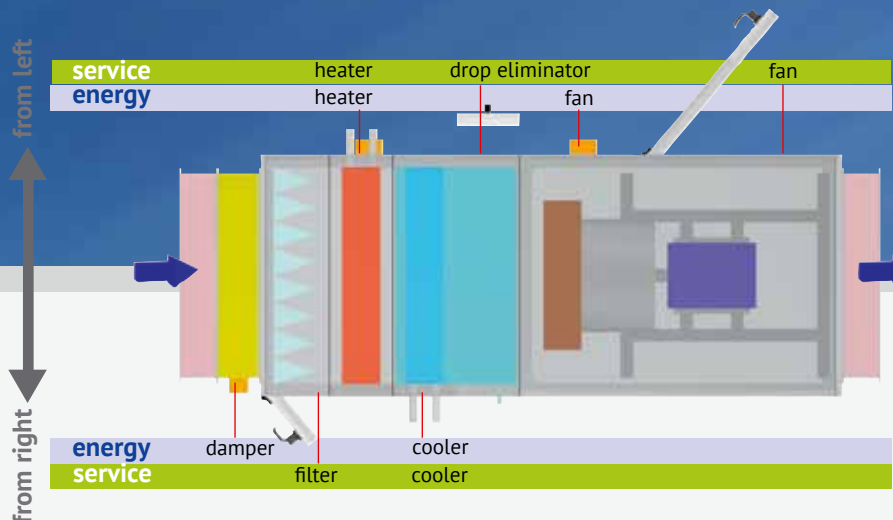


UNIQUE VARIABILITY OF SUPPLY CONNECTION

Construction of AeroMaster XP units enables to combine side of supply connection with side of service access.

This option gives a designer a chance to optimally use the space of the machine room and the current supply distribution.

Side of service access is determined by air flow direction



MODULAR AIR-HANDLING UNITS

CASING MECHANICAL STRENGTH	D2 (M)
CASING AIR LEAKAGE	L2 (M), (L1(M) OPTIONAL)
FILTER BYPASS LEAKAGE	< 0,5% (F9)
THERMAL INSULATION	T3
THERMAL BRIDGING	TB3
OPERATING TEMPERATURE	-40 TO +40°C
CASING ACOUSTIC INSULATION (dB/OCTAVE BAND)	
16,1/125, 19,1/250 Hz, 27,0/500 Hz, 29,7/1 kHz, 30,2/2 kHz, 29,3/4 kHz, 33,2/8 kHz	



MOTORIZED IMPELLERS



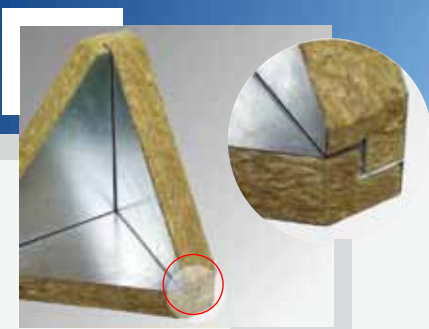
AUTOMATIC BACKUP OF FAN MOTORS



CLEAN INTERNAL SURFACES



LABYRINTH CONNECTION OF PANELS



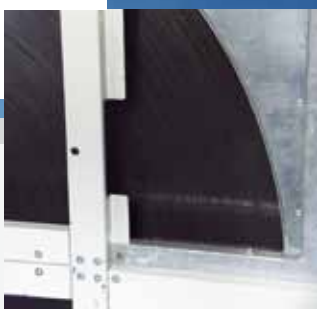
INTERNAL CONNECTION OF SECTIONS



AeroMaster XP



HEAT RECOVERY



EASILY CHANGEABLE FILTERS



REMOVABLE DROP
ELIMINATORS

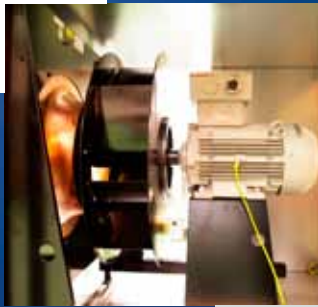


MODULAR AIR-HANDLING UNITS

SECTION WITH VCS CONTROL SYSTEM



EX UNIT DESIGN FOR EXPLOSIVE AREAS



SECTION WITH INTEGRATED COOLING



HIGH CASING TIGHTNESS, CLASS A EN 1886



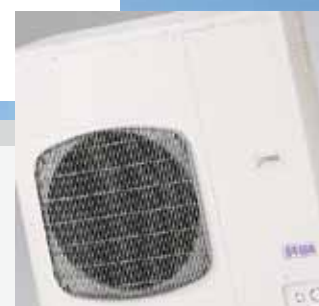
GAS HEATER SECTION



SHORTENED LENGTH OF THE PLATE HEAT EXCHANGER SECTION



INVERTER UNITS





WIRING TAKEN OUT
TO WIRING BOXES



ADJUSTABLE FRAME FEET

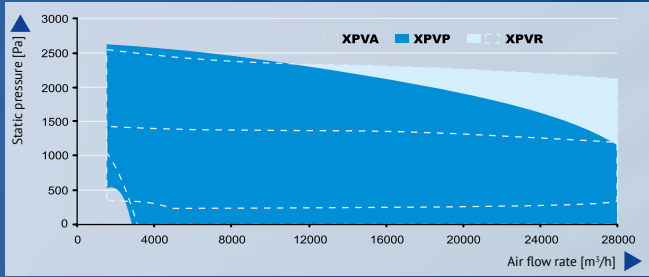


PARAMETRICALLY LINKED
CONTROL

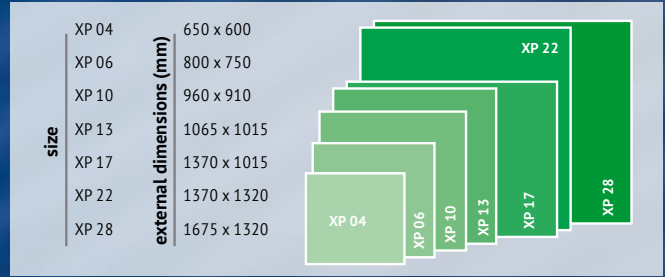


The producer reserves right for changes without previous notice. R08060303

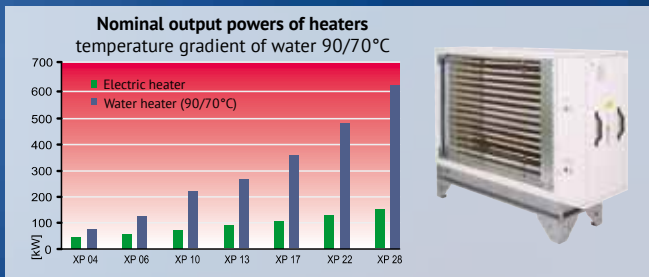
AIR FLOW RATE AND PRESSURE LOSS



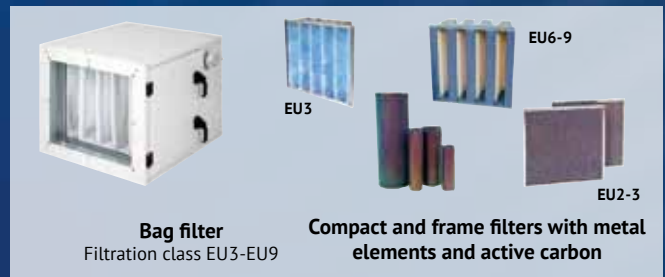
SIZES AND DIMENSIONS



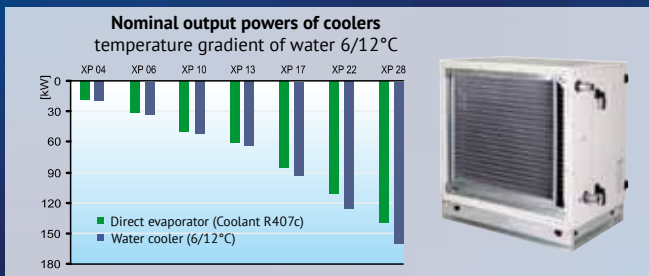
HEATING



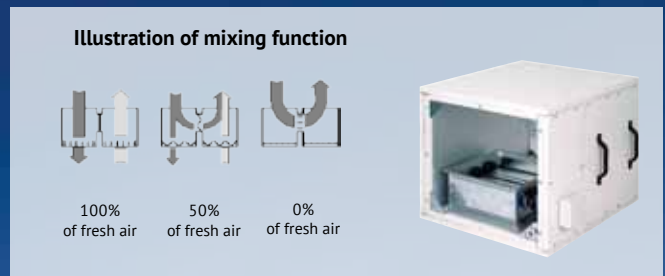
FILTRATION



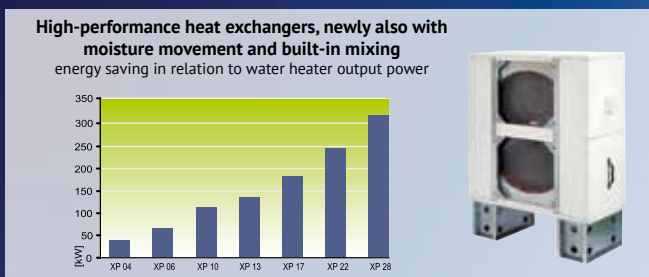
COOLING



MIXING



HEAT RECOVERY



NOISE ATTENUATION

